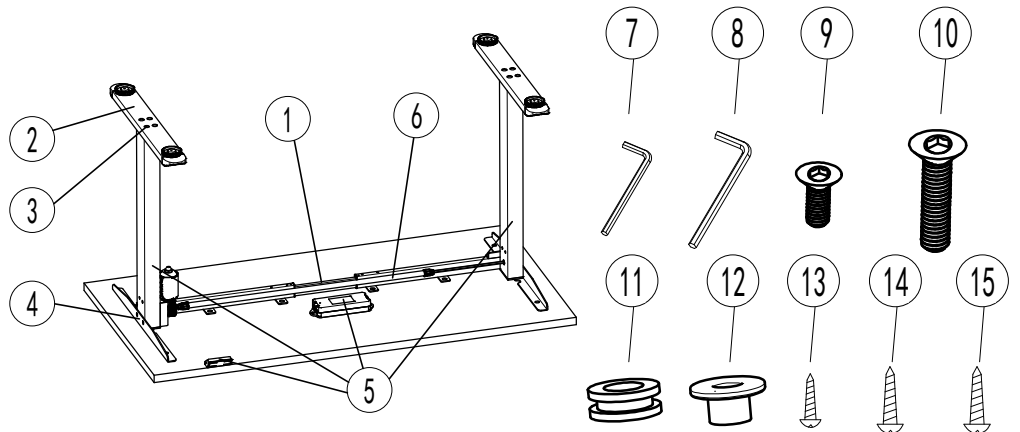


Assembly Instructions

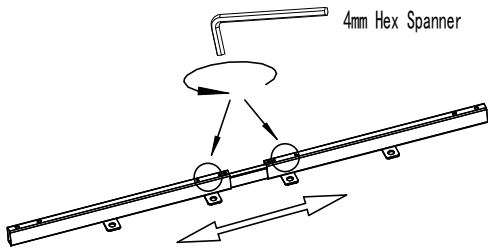
AOKE SINGLE

Parts and Tools list

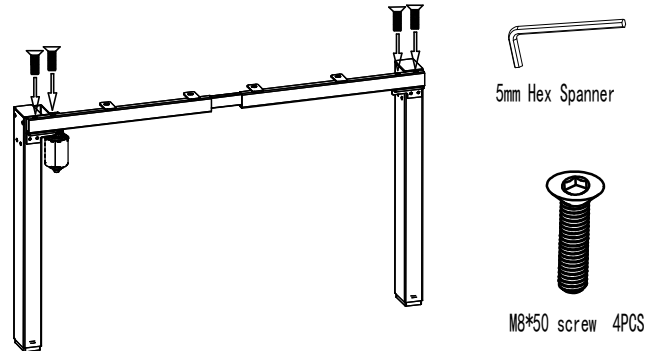
NO.	Name	Qty	NO.	Name	Qty
1	Support Beam	1	11	Rubber Cushion	8
2	Foot	2	12	Plastic Pad	8
3	M6*14 Screw	8	13	ST3.5*19 Screw	2
4	Bracket	2	14	ST4.8*19 Screw	2
5	Lifting System	1set	15	ST4.8*25 Screw	8
6	Driveshaft	1set			
7	4mm Hex Spanner	1			
8	5mm Hex Spanner	1			
9	M6*12 Screw	4			
10	M8*50 Screw	4			



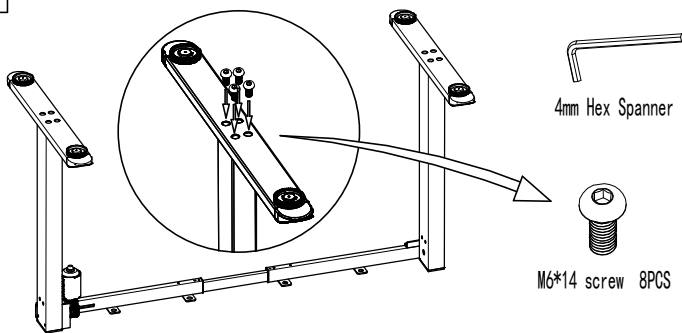
- 1** Loosen the M6*10 screw on the beam with 4mm hexagon wrench, then adjust the length of the beam according to the tops, and finally fix the beam with the screw on the beam.



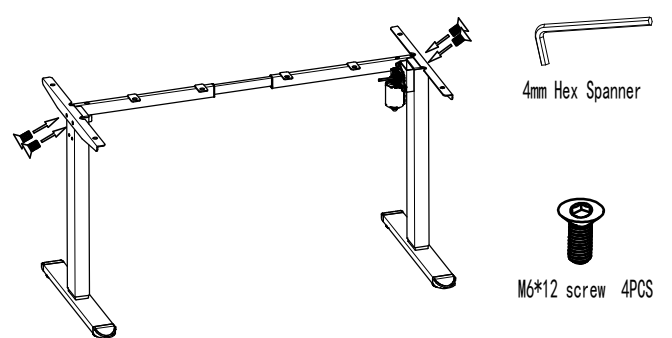
- 2** Attach legs to the beam using 4 of M8*50 screws.



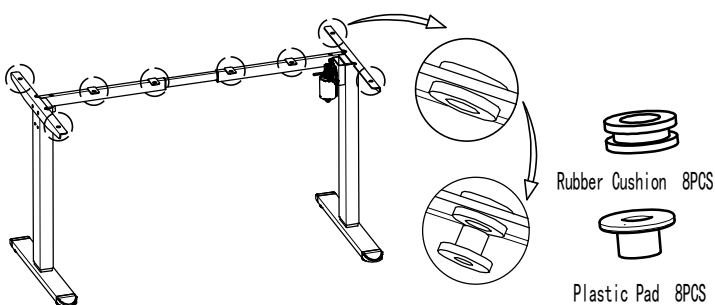
- 3** Attach 2 feet to leg using 8 of M6*14 screws.



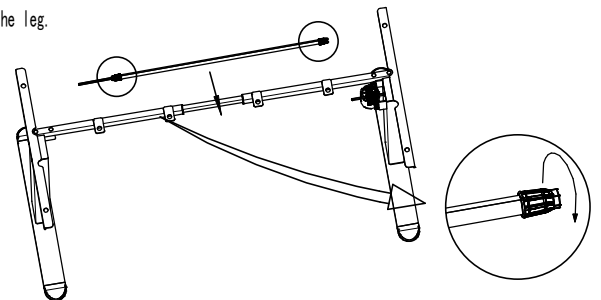
- 4** Attach brackets to beam using 4 of M6*12 screws.



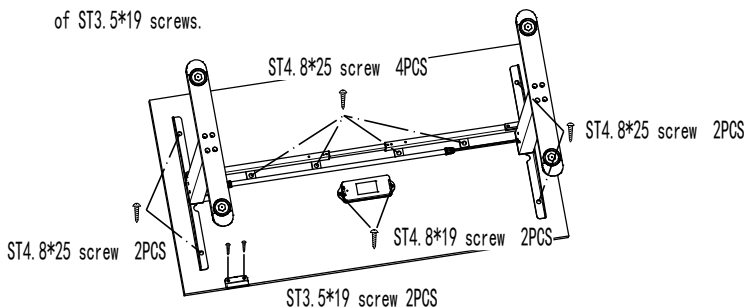
- 5** Fit the rubber cushions and plastic pad to the brackets and beam.



- 6** Loosen nut on each end of the transmission rod using spanner, connect the hex rod of main leg to one end of the transmission rod and the hex rod of transmission rod insert to the other leg.



- 7** Fix table top to frames with 8 of ST4.8*25 screws, then fix control boxes to below table top with 2 of ST4.8*19 screws, at last fix handsets to below table top with 2 of ST3.5*19 screws.



- 8** Connect the control box to the handset and to the motor.

